

▶ AT A GLANCE



6

COUNTRIES



24

CONTAINER TERMINALS



11

OFFICES

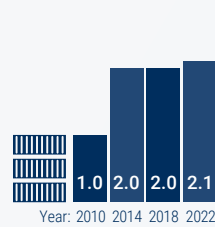


1,280

EMPLOYEES

DEVELOPMENT (2010-2022)

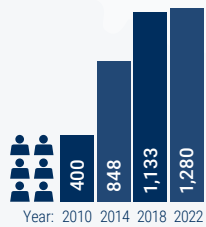
TEU (millions)



TURNOVER (million Euro)

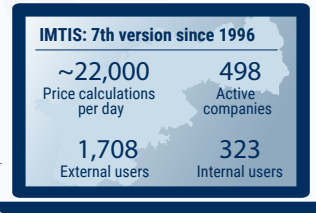


EMPLOYEES



IMTIS

Intermodal Tariff Information System



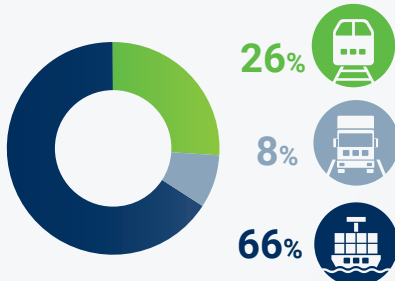
Internally-developed OpenSource-based software for calculating tariffs and CO₂e emissions in combined transport.



▶ COMBINED TRANSPORT

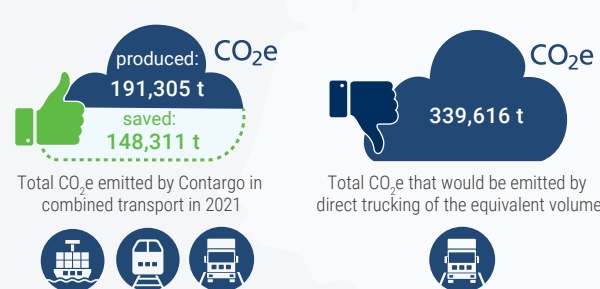
MODAL SPLIT

Combination of barge, rail and truck:



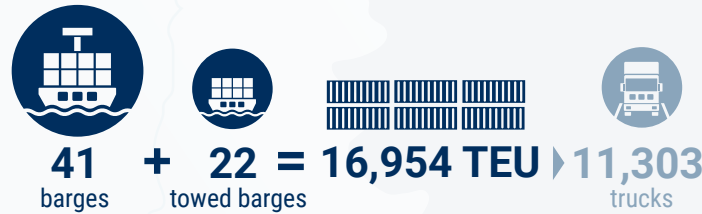
CO₂e COMPARISON (2021)

Combined transport versus direct trucking



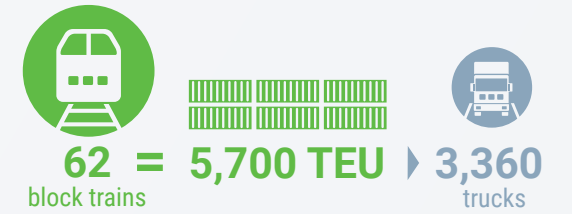
▶ TRANSPORT CAPACITY

CONTARGO BARGE FLEET



Contargo's permanent fleet comprises 41 motorised inland vessels and 22 towed barge units, with a total transport capacity of 16,954 TEU. Approximately 11,303 truck transports would be needed to transport the same quantity of goods by direct trucking. Conclusion: barge transports free up the roads and are eco-friendly.

CONTARGO RAIL FLEET



62 whole trains run every week for Contargo, transporting 5,700 TEU. If the same quantity were transported by direct trucking, 3,360 transports would be needed. Conclusion: Train transports save time for Contargo and generate considerably less CO₂e.