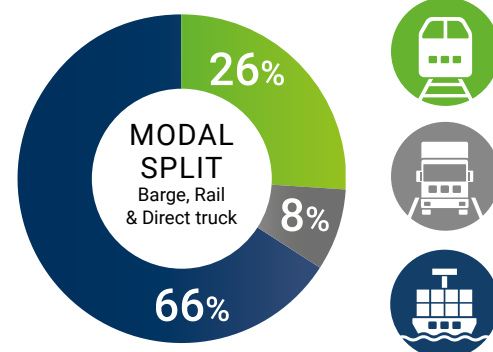




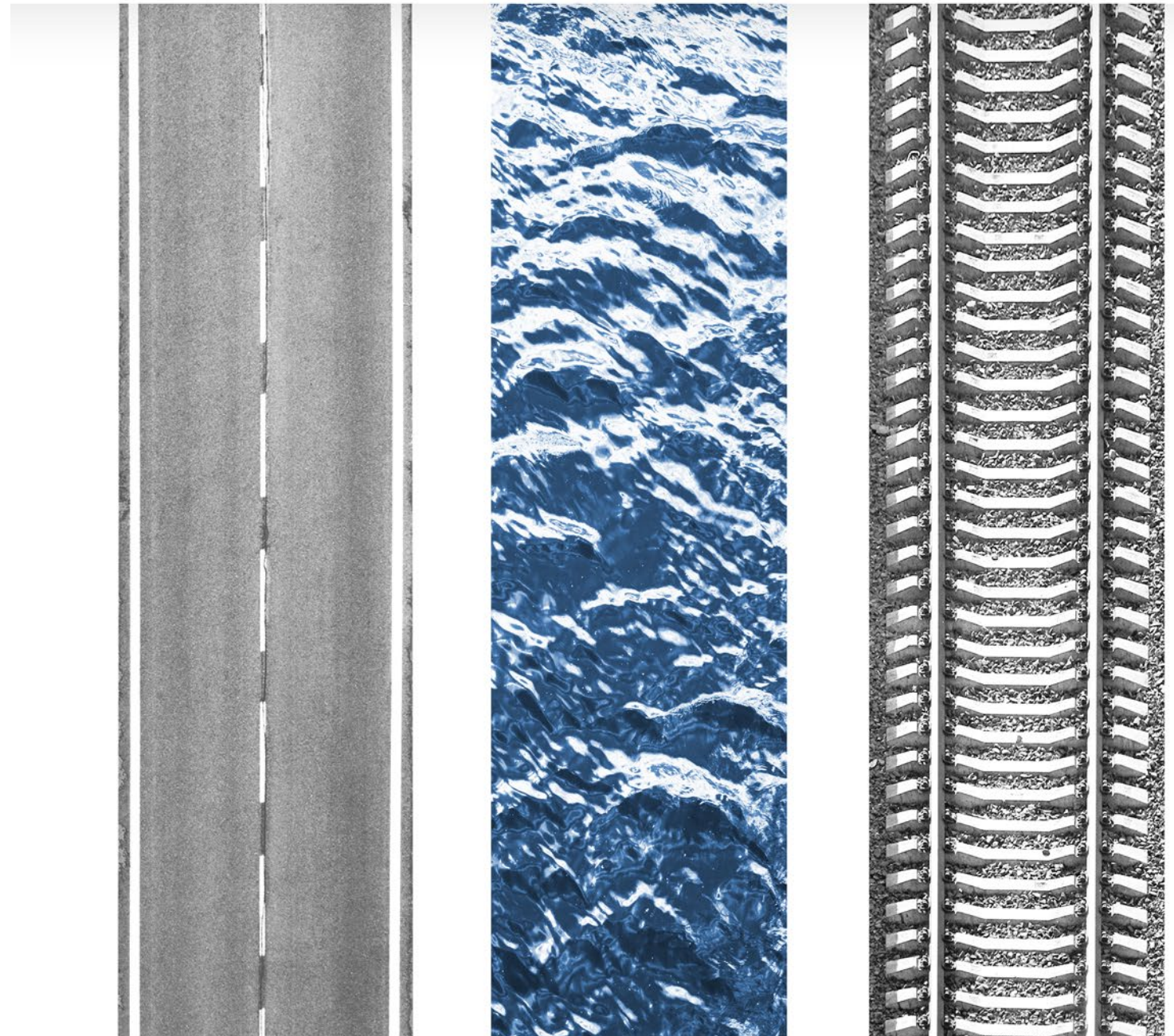
## MODAL SPLIT AT CONTARGO



When transporting large volumes over long distances, Contargo uses barge and rail for the main run. Trucks are primarily used for local door-to-door delivery and collection of customers' containers. Conclusion: In Contargo's modal split the advantages of each transport mode can be maximised.

# CONTARGO®

At a glance ...



\*CONTARGO at a glance" \_EN\_ 05/2023 - Aufl.: 500 ©Contargo, Shutterstock.com

www.contargo.net

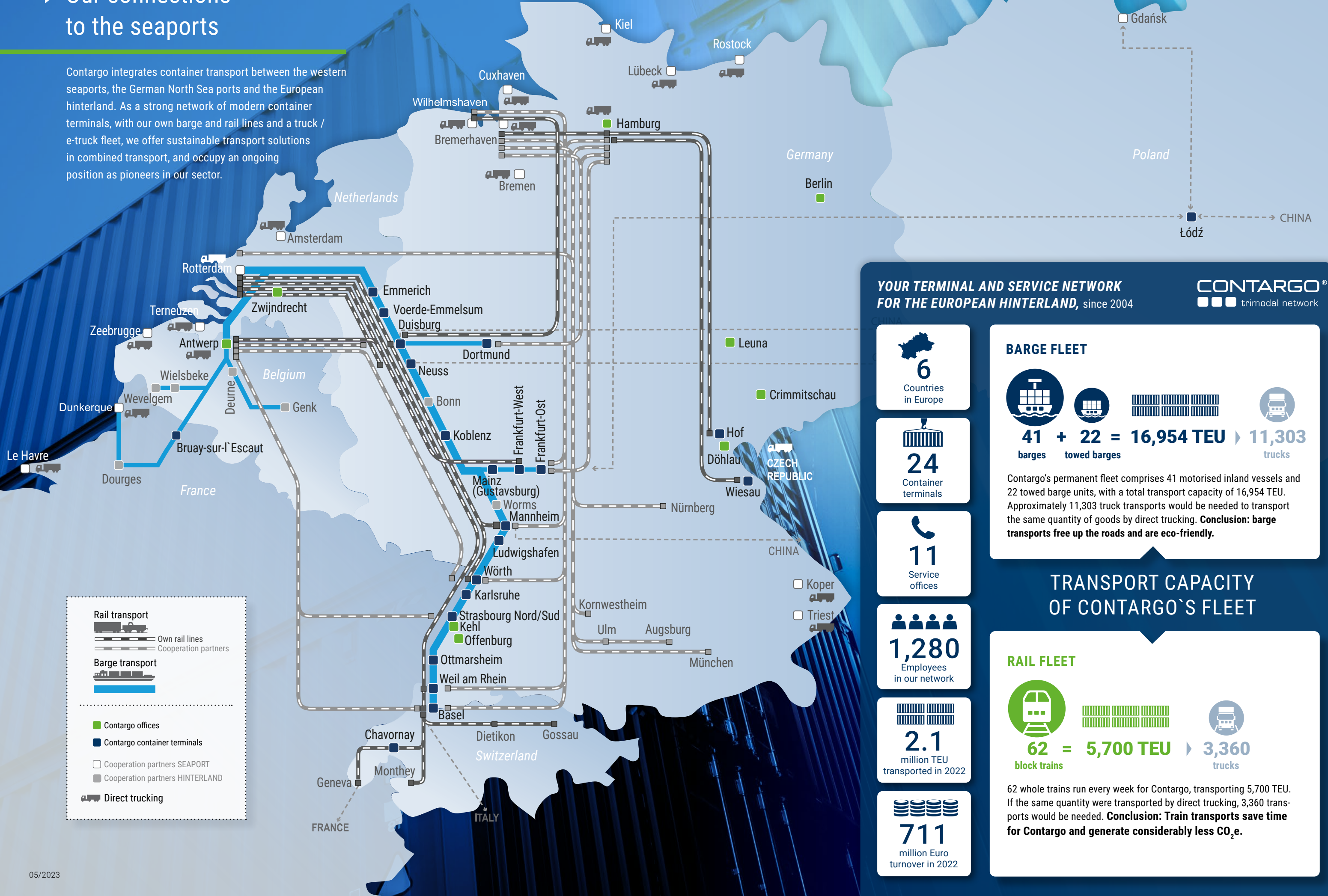
Take the better route!

Take the better route!



## ► Our connections to the seaports

Contargo integrates container transport between the western seaports, the German North Sea ports and the European hinterland. As a strong network of modern container terminals, with our own barge and rail lines and a truck / e-truck fleet, we offer sustainable transport solutions in combined transport, and occupy an ongoing position as pioneers in our sector.



### YOUR TERMINAL AND SERVICE NETWORK FOR THE EUROPEAN HINTERLAND, since 2004

**CONTARGO®**  
trimodal network

**6**  
Countries  
in Europe

**24**  
Container  
terminals

**11**  
Service  
offices

**1,280**  
Employees  
in our network

**2.1**  
million TEU  
transported in 2022

**711**  
million Euro  
turnover in 2022

#### BARGE FLEET

**41 + 22 = 16,954 TEU** **11,303**  
barges towed barges trucks

Contargo's permanent fleet comprises 41 motorised inland vessels and 22 towed barge units, with a total transport capacity of 16,954 TEU. Approximately 11,303 truck transports would be needed to transport the same quantity of goods by direct trucking. **Conclusion: barge transports free up the roads and are eco-friendly.**

### TRANSPORT CAPACITY OF CONTARGO'S FLEET

#### RAIL FLEET

**62 = 5,700 TEU** **3,360**  
block trains trucks

62 whole trains run every week for Contargo, transporting 5,700 TEU. If the same quantity were transported by direct trucking, 3,360 transports would be needed. **Conclusion: Train transports save time for Contargo and generate considerably less CO<sub>2</sub>e.**