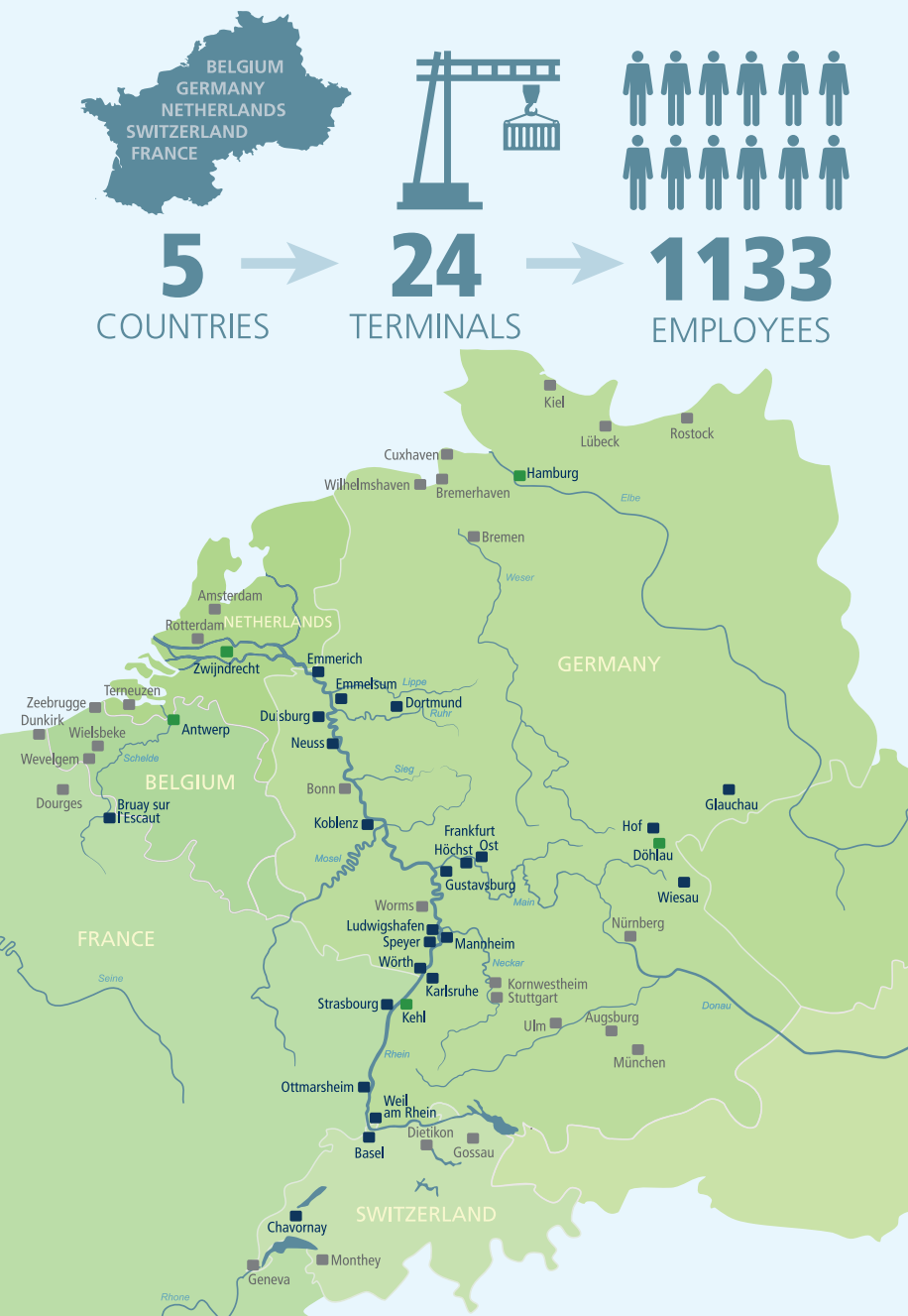
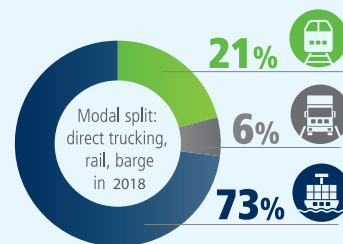


## ► CONTARGO TERMINAL AND SERVICE NETWORK (2018)



## ► MODAL SPLIT (2018)

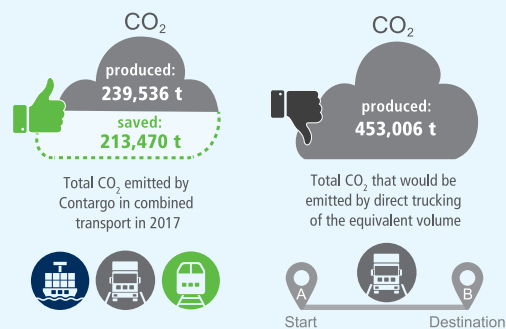


## ► DEVELOPMENT (2010, 2014, 2016, 2018)



## ► CO<sub>2</sub> COMPARISON (2017)

Combined transport versus direct trucking



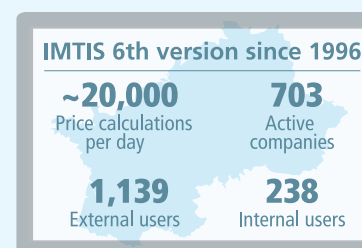
## ► PERMANENT FLEET (2018)



Contargo's permanent fleet comprises 46 motorised inland vessels and 15 towed barge units, with a total transport capacity of 15,540 TEU. Approximately 10,291 truck transports would be needed to transport the same quantity of goods by direct trucking.

**Conclusion: barge transports free up the roads and are eco-friendly.**

## ► IMTIS 6 (2018)



Intermodal Tariff Information System (IMTIS): Internally-developed OpenSource-based software for calculating tariffs and CO<sub>2</sub> emissions in combined transport.

## ► RAIL TRANSPORTS (2018)



56 whole trains run every week for Contargo, transporting 5,152 TEU. If the same quantity were transported by direct trucking, 3,030 transports would be needed.

**Conclusion: Train transports save time for Contargo and generate considerably less CO<sub>2</sub>.**

