

OUR TEAM IS THERE FOR YOU!

✉ sales@contargo.net

Homepage & Newsletter  
www.contargo.net

IMTIS Contargo online pricing tool  
imtis.contargo.net

LinkedIn  
www.linkedin.com/company/contargo-ag

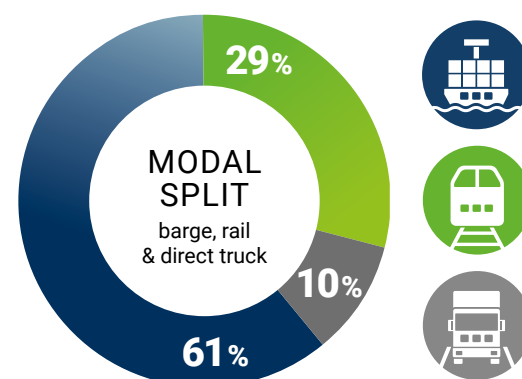
Wikipedia  
de.wikipedia.org/wiki/Contargo

Facebook  
www.facebook.com/Contargo.DE

Instagram  
https://instagram.com/contargo\_official



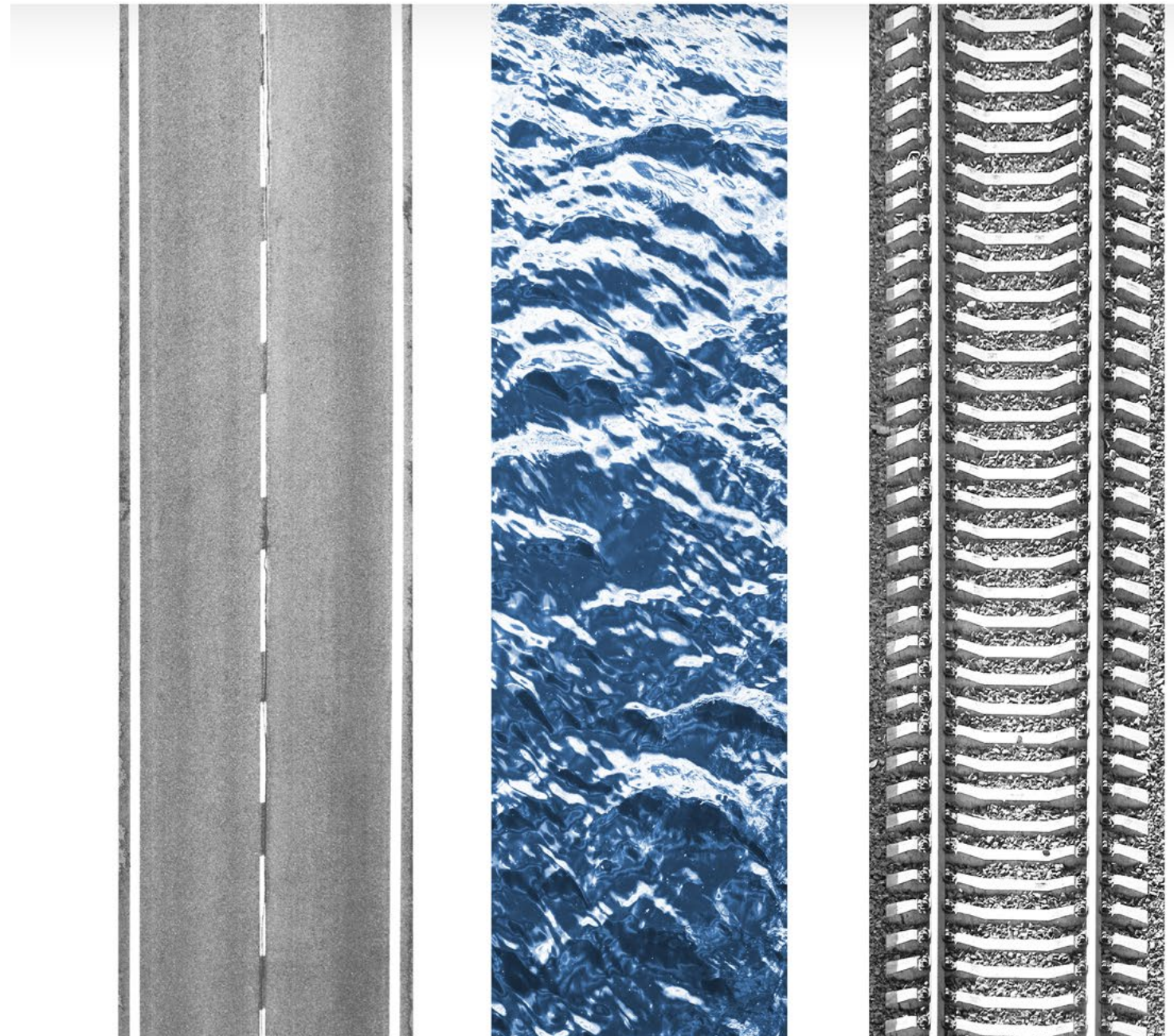
MODAL SPLIT AT CONTARGO



When transporting large volumes over long distances, Contargo uses barge and rail for the main run. Trucks are primarily used for local door-to-door delivery and collection of customers' containers. Conclusion: In Contargo's modal split the advantages of each transport mode can be optimally utilised.

# CONTARGO®

At a glance ...

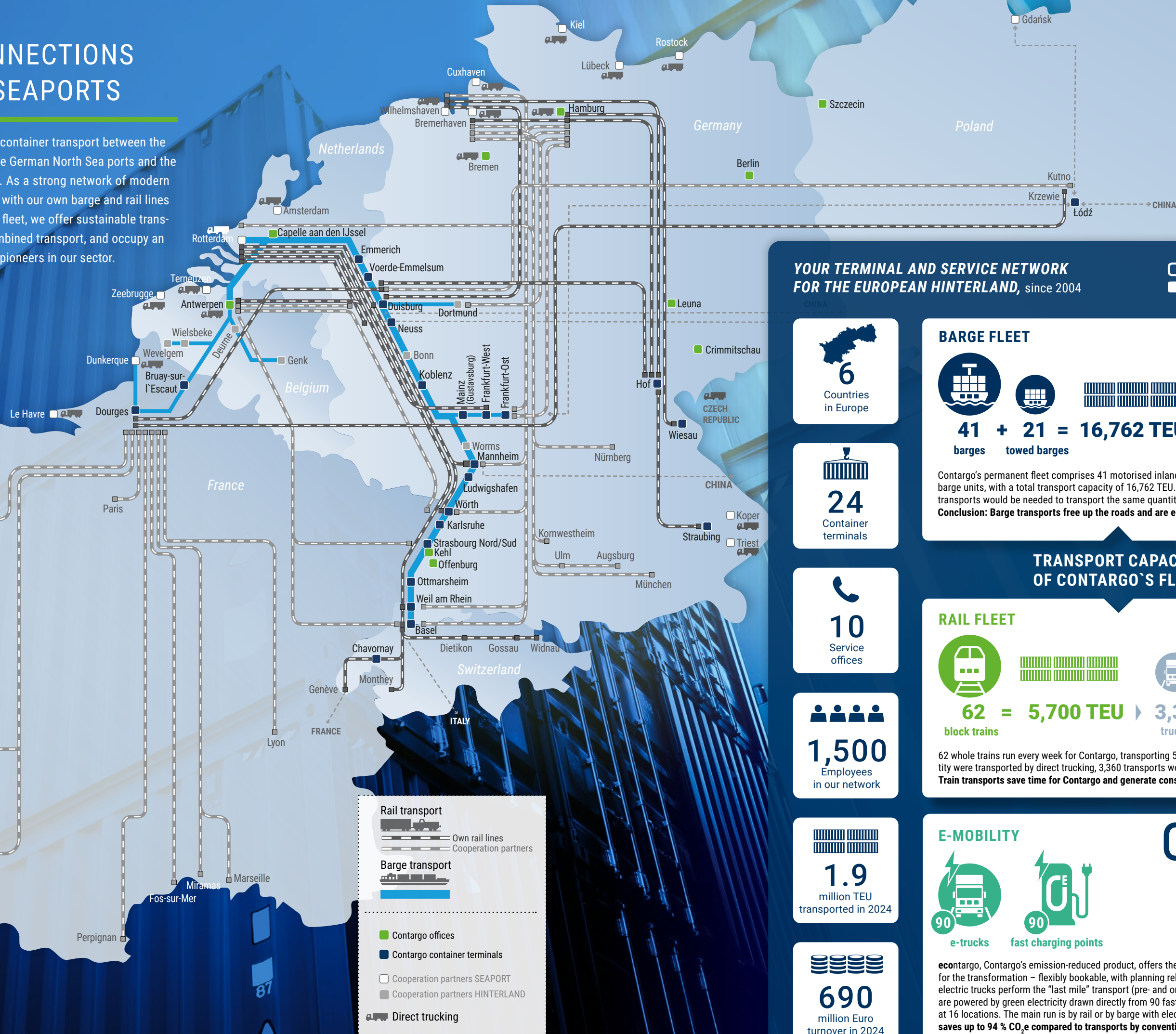


Take the better route!



## ► OUR CONNECTIONS TO THE SEAPORTS

Contargo integrates container transport between the western seaports, the German North Sea ports and the European hinterland. As a strong network of modern container terminals, with our own barge and rail lines and a truck / e-truck fleet, we offer sustainable transport solutions in combined transport, and occupy an ongoing position as pioneers in our sector.



### YOUR TERMINAL AND SERVICE NETWORK FOR THE EUROPEAN HINTERLAND, since 2004

**CONTARGO®**  
trimodal network

**6**  
Countries  
in Europe

**24**  
Container  
terminals

**10**  
Service  
offices

**1,500**  
Employees  
in our network

**1.9**  
million TEU  
transported in 2024

**690**  
million Euro  
turnover in 2024

#### BARGE FLEET

**41 + 21 = 16,762 TEU** ▶ **11,174**  
barges towed barges trucks

Contargo's permanent fleet comprises 41 motorised inland vessels and 21 towed barge units, with a total transport capacity of 16,762 TEU. Approximately 11,174 truck transports would be needed to transport the same quantity of goods by direct trucking. **Conclusion: Barge transports free up the roads and are eco-friendly.**

#### TRANSPORT CAPACITY OF CONTARGO'S FLEET

##### RAIL FLEET

**62 = 5,700 TEU** ▶ **3,360**  
block trains trucks

62 whole trains run every week for Contargo, transporting 5,700 TEU. If the same quantity were transported by direct trucking, 3,360 transports would be needed. **Conclusion: Train transports save time for Contargo and generate considerably less CO<sub>2</sub>e.**

##### E-MOBILITY

**90** e-trucks **90** fast charging points

**econtargo**  
the zero emissions way

**econtargo**, Contargo's emission-reduced product, offers the first one-stop shop solution for the transformation – flexibly bookable, with planning reliability. Altogether 90 fully electric trucks perform the "last mile" transport (pre- and on-carriage) of your goods. They are powered by green electricity drawn directly from 90 fast charging points installed at 16 locations. The main run is by rail or by barge with electric motor. **Thus econtargo saves up to 94 % CO<sub>2</sub>e compared to transports by conventional direct trucking.**